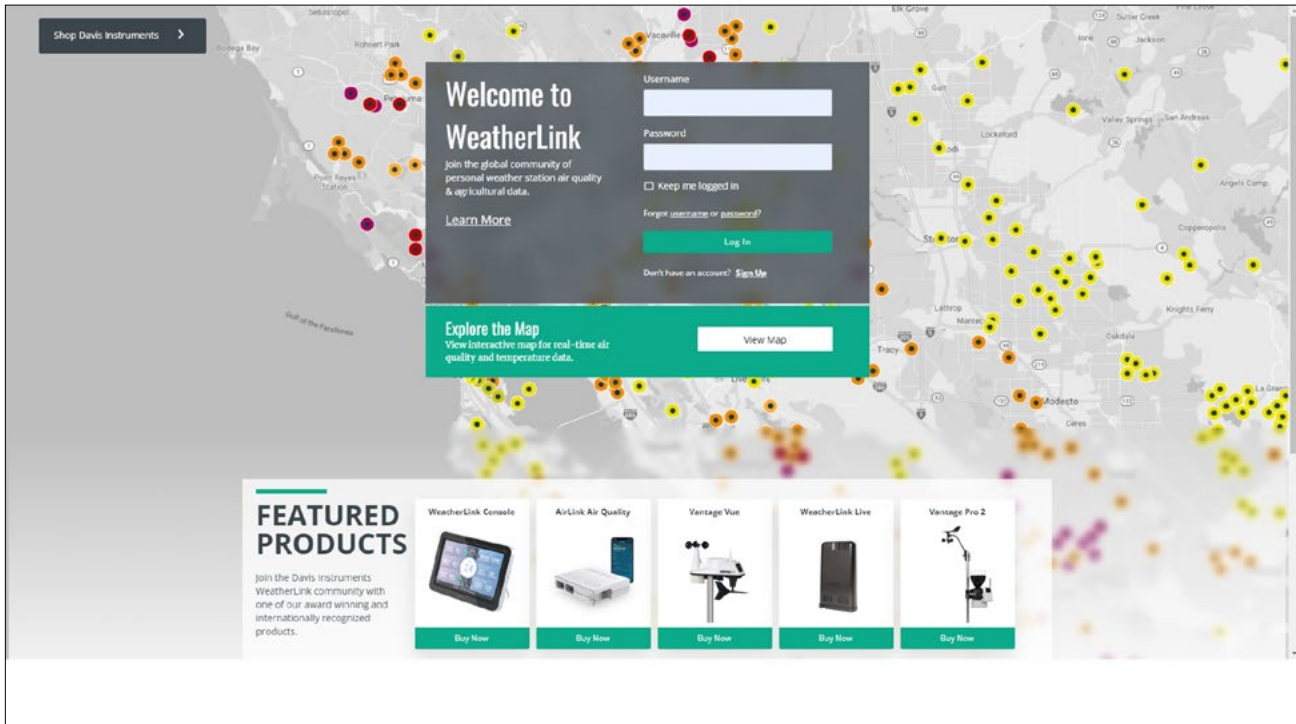


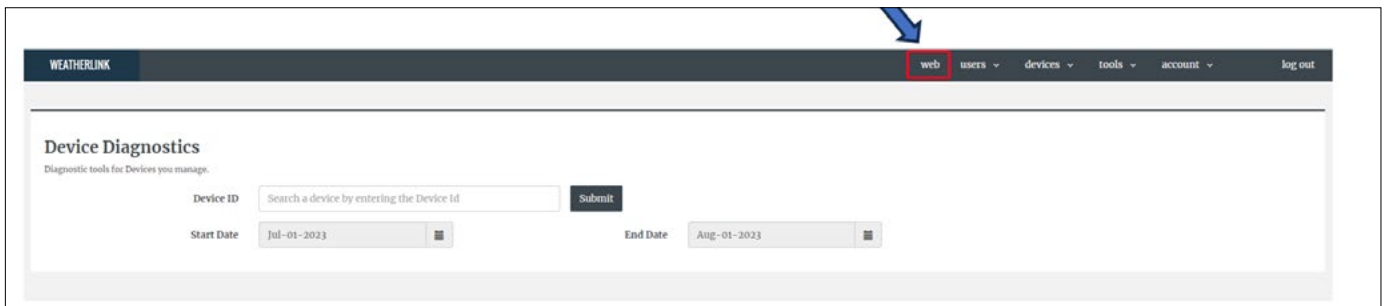
# Connecting Davis Weather station to Galileo Cloud Controller (5 minutes task)

Go to <https://www.weatherlink.com/>

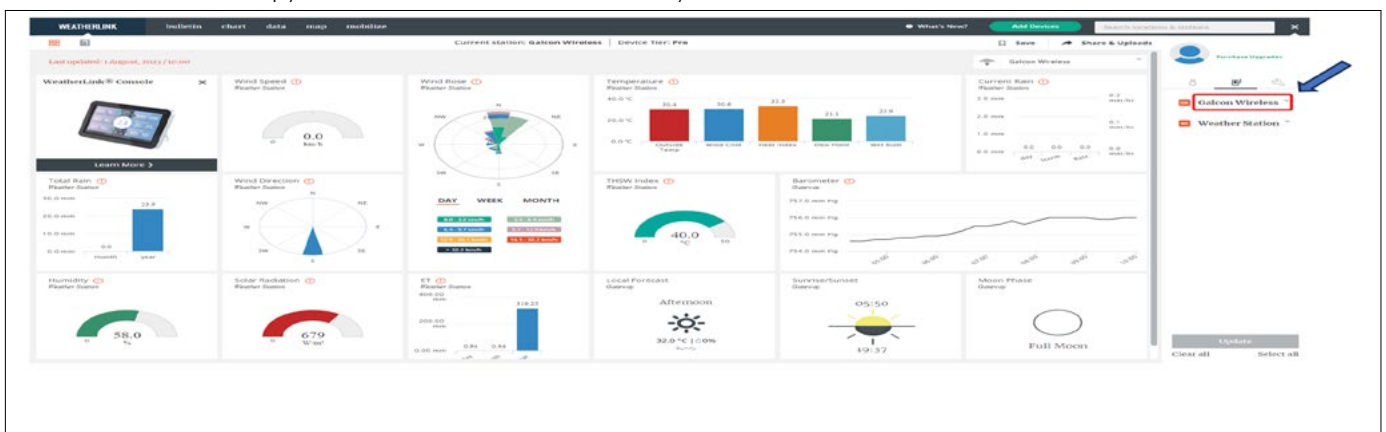
Login to your Davis account – If you still don't have an account, You will have to sign up.



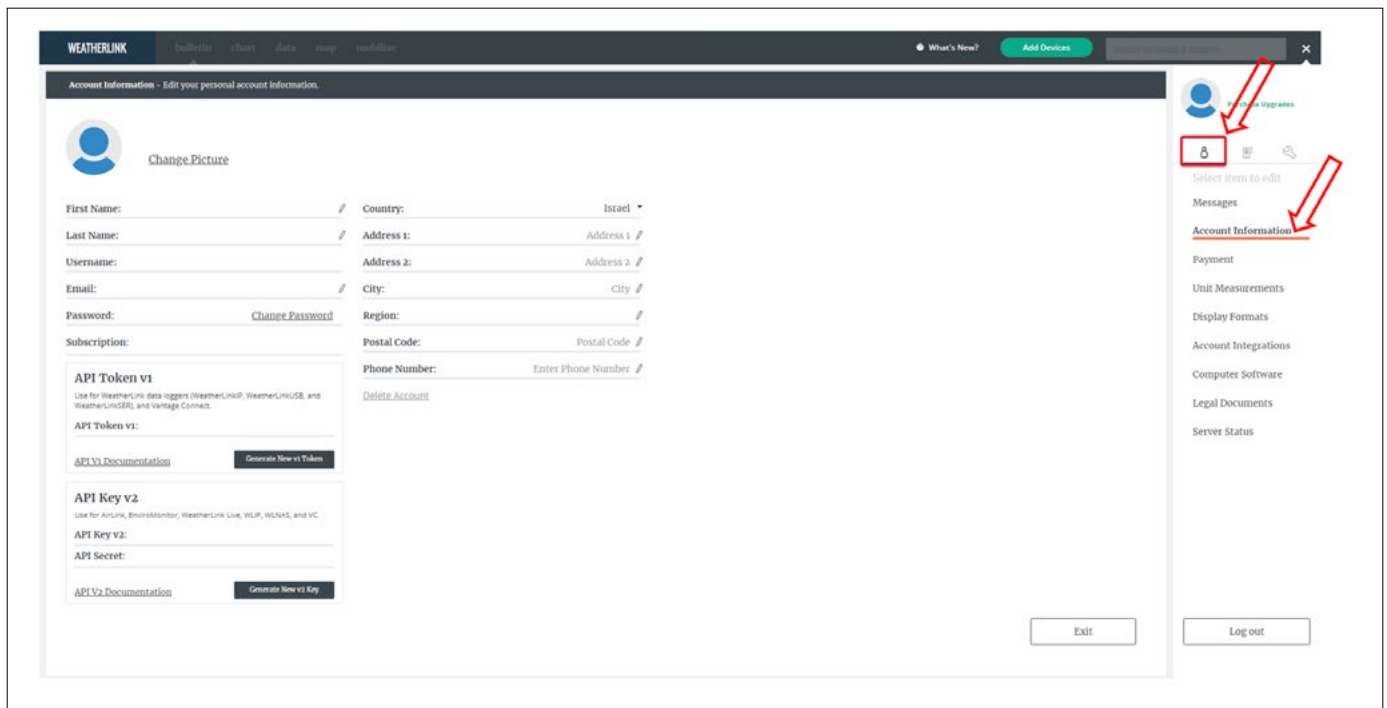
Go to Web:



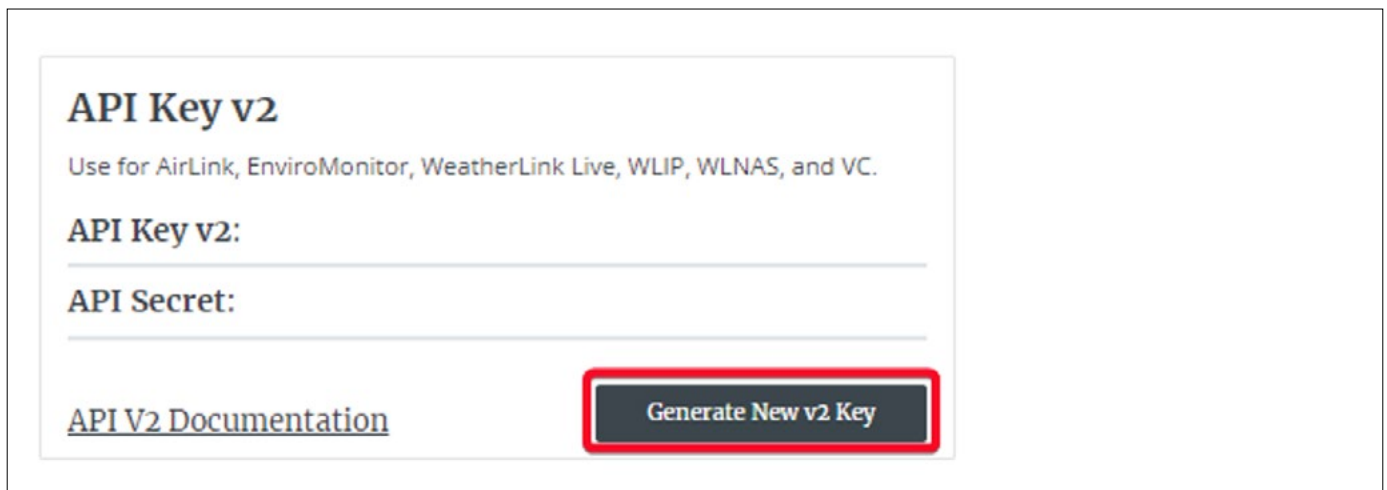
In The Station list – Copy the station name of the station you want to connect to Galileo Cloud controller -



Go to Account Settings – Account Information



**If API Key values are blank** - Click the "Generate New v2 Key" tab at the bottom left side of the screen to bring the API Key v2 and the API Secret keys.



Copy those keys.

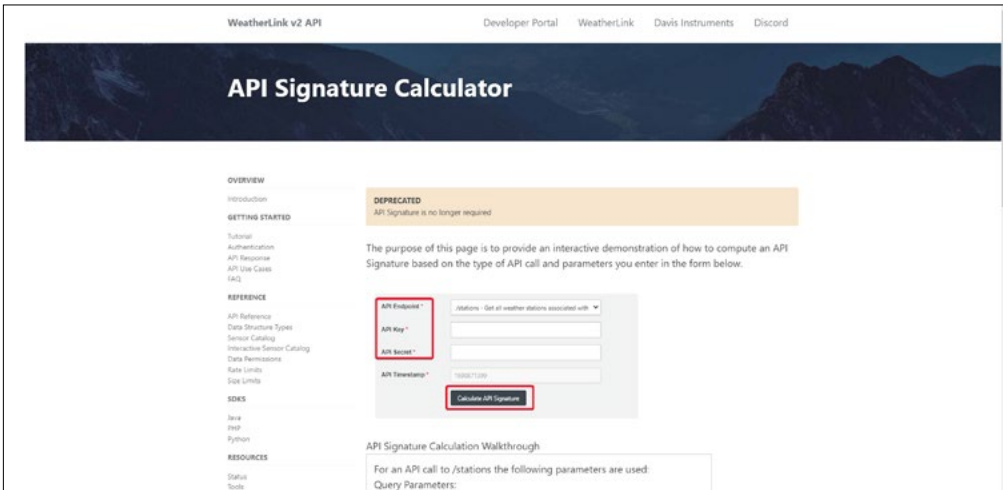
**If API keys already exist** - DO NOT reset the keys because it will disconnect any controllers that are already connected to this station.

Go to: <https://weatherlink.github.io/v2-api/api-signature-calculator>

Select API endpoint: **/stations – Get all weather stations associated with your API key**

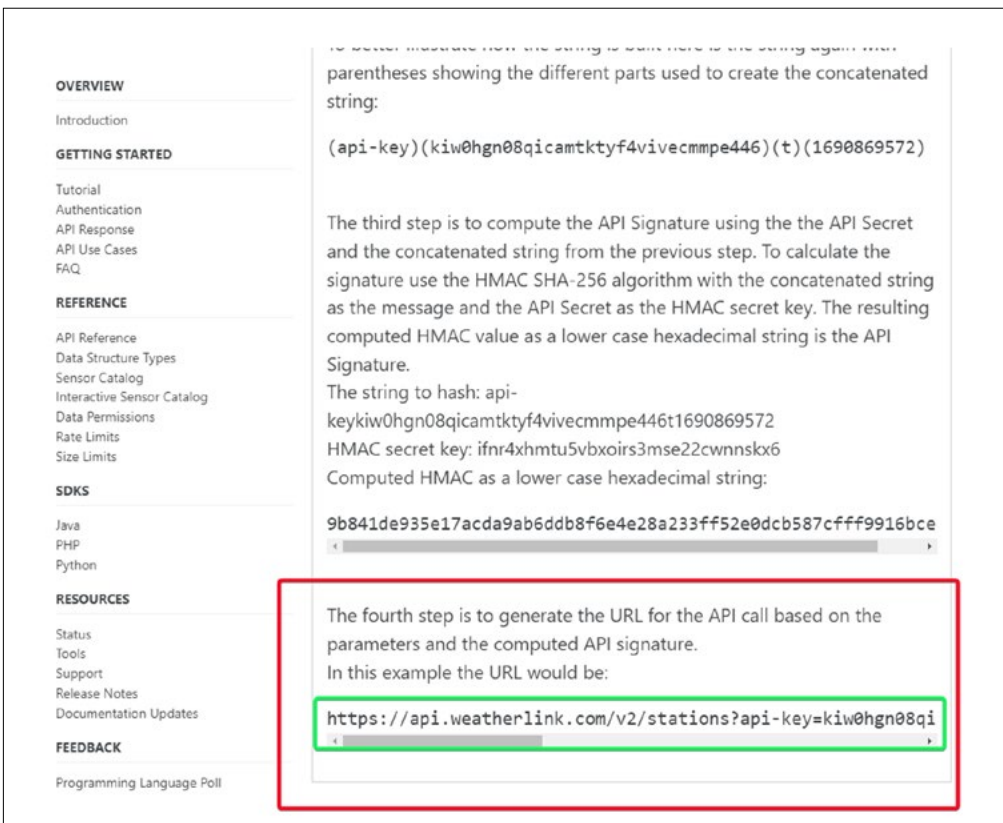
Enter your API Key v2 and the API Secret keys.

Click [Calculate API Signature]



Scroll down to the bottom of the output and copy the URL received in the Paragraph starting with "The fourth step".

Copy the complete the URL from "The fourth step" starting with <https://api.weatherlink.com/v2....>



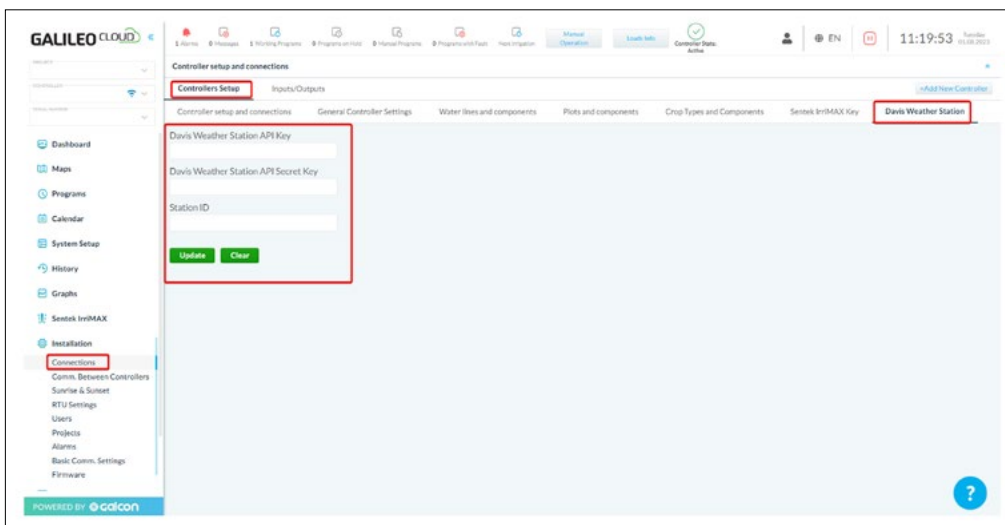
Open a new window in your browser.

Fill the URL in the search top bar and press Enter (you could use postman for nicer presentation of the data)

Search for the station Name, and copy the station ID



Select controller → Installation → Connections  
 Controller Setup (tab) → Davis Weather Station (tab)  
 Input API key, API Secret key, Station ID -> Update (tab)



**That's it! Your Davis Weather Station is now connected to your Galileo Cloud via API!**

Here you can see the information coming from it:

Davis weather station widget

